

CENTURYAN



Haslar Bridge, Gosport

Best Wishes For Christmas

We find ourselves rapidly approaching the end of 2015 and I would like to welcome you to another exciting edition of Centuryan.

2015 has been an eventful year for Centura Group Companies.

Strong and steady sales have been matched

with good margins and the all-important generation of cash. We celebrated the 60th Anniversary of Concrete Repairs Ltd in June. The year has also seen the growth of collaboration amongst our Group companies with several projects and clients being shared between businesses.

Notable in the year has been the continued growth and success of CRL Surveys Ltd, now an independent company. Equilux have successfully installed their first cathodic protection system for CRL Bristol office. Buxton Associates have expanded with the opening of a London office in order to get closer to so many important clients. Whilst each

Centura company is encouraged to work independently and in its own market, it is great to see inter-company opportunities now being identified and used to benefit the whole group.

CRL trades in an ever changing marketplace. 2015 has seen growth in our frameworks in both the water industry and wind energy generation. The year started with the confidence of a long term workload for Highways England. The year will end with uncertainty in that sector as Government budgets are reduced and priorities for spending are changed. This is a disappointing development especially after so much work was put in to creating such a fantastic team.

But it is difficult to remember a time when the market has not been uncertain. The beauty of our business is that we can adapt to opportunities. This year we have seen growth in our facades business in the South West. We have seen the hard work put in to create CRL Restorations being rewarded with a major heritage project on the Isle of Wight. We have seen an increase in repeat work for

major clients in all of our regions and companies. This is vitally important. Repeat work demonstrates confidence in our business from our customers and confirms that we are reliable and deliver professionalism and quality.

2015 saw the award of the RoSPA Order of Distinction, recognising, yet again our excellence in the management of Health and Safety. We seek to provide a safe and secure workplace, we encourage training and career development and we reinvest to build on the strength, value and reputation of the group.

2016 will present similar opportunities. The government has made a commitment to spending in infrastructure but it appears that money will not be available to spend for several months. A commitment to housing has also been made which always has a knock on effect for us. We expect spending in water, wind energy and telecoms to continue. We already have enquiries for next year from all of those sectors.

Along with the Board I would like to express my sincere thanks to each and every one of you for the enthusiasm and strength that you each give to Centura. I hope that you all enjoy a break at Christmas and relax with family, friends and loved ones.

I look forward to sharing all the exciting opportunities that await us in 2016.

Tony Rimoldi
Chief Executive

the numbers

A regular feature in this newsletter is to publish a scorecard showing how the group is performing. The following tables has gathered together all the latest information from the current financial year.



Customers & Markets

397

No. of tenders submitted

£37.5m

Value of tenders submitted

163

No. of new contracts awarded

£8.7_m

Value of contracts awarded

Operational

100

% of performance questionnaires showing client satisfaction

123

No. of contracts in progress

104

No. of contracts ahead of target

Learning, Quality & Innovation

266,243

RIDDOR free man hours

99%

% CSCS carded site workforce

96%

Min H&S Training Compliant

0

Suggestions submitted in the Innovation scheme

Financial & Stakeholders

Turnover year to June



Profit year to June



Overhead costs year to June



Cash Flow



Group Business Plan Sales Target for Year to June 2016

	Target	Total
Concrete Repairs Ltd		
Bristol	£5.5m	
Chesterfield	£13.0m	
Falkirk	£4.65m	
Mitcham	£9.10m	£32.25m
CRL Surveys Ltd	£1.20m	£1.20m
Buxton Associates Ltd	£1.00m	£1.00m
Equilux Ltd	£0.85m	£0.85m
TL Fire Ltd	£0.20m	£0.20m
Total Sales Forecast		£36.50m

group gossip

THE GROUP WOULD LIKE TO WELCOME...

DEREK CORR, EQUILUX
JODIE BRINTON, CRL BRISTOL
JO ANN ODUBER, BUXTON ASSOCIATES
PIOTR WELZANT, CRL SURVEYS
CLEMENTINE DAL FITTO, BUXTON ASSOCIATES
IAN WELSH, CRL FALKIRK
ANDREW McDONALD, CRL SURVEYS
COLIN CATT, EQUILUX
STEVEN DOBINSON, CRL CHESTERFIELD
ESTHER DAYKIN, CRL BRISTOL
JASON SHARP, CENTURA
DAVID SOUTHEY, EQUILUX

CLAUDIA WING, EQUILUX
JASON ILAGAN, CRL SURVEYS
MARTIN NEALE, CRL BRISTOL
PAUL DENNING, CRL BRISTOL
ANGELA HARDOON, CENTURA
KANE MORGAN, CRL BRISTOL
LEE TANDY, CRL CHESTERFIELD
KAILY FOX, BUXTON ASSOCIATES
EINARS VITOLS, CRL BRISTOL
SAMUEL NIELSEN, CRL SURVEYS
JONATHAN MARSH, CRL CHESTERFIELD
NICOLAS ETIENNE, CRL CHESTERFIELD

SAY GOODBYE TO...

LISA FRANCIS, CENTURA
CHRISTOPHER FAWCETT, CRL FALKIRK
IAN ROBINSON, CRL CHESTERFIELD
ANDY YELLAND, CRL CHESTERFIELD
LEE RIDLEY, CRL CHESTERFIELD
ROSS THOMAS, CRL BRISTOL
STEVEN THOMAS, CRL BRISTOL
STEPHANIE CORRIGAN, CRL MITCHAM
GERRY RICHARDSON, CENTURA
KERRIE TYSON, CRL MITCHAM
STANLEY THORNTON, CRL FALKIRK
ANTHONY PUGH, CRL MITCHAM
ANDROULLA CLEMENTS, BUXTON ASSOCIATES
ANGELA MCINTOSH, CENTURA
RAFAL PRZEPIORA, CRL MITCHAM

THOMAS LUYIMBO-LULE, CRL SURVEYS
CALLUM WEBB, CRL BRISTOL
ROCHELLE BOWEN, EQUILUX
LOUISE OWEN, CRL BRISTOL
JAKUB RUTKOWSKI, CRL SURVEYS
TERENA SAGE, CRL BRISTOL
VARINDER SINGH AITEN, CRL CHESTERFIELD
MATTHEW KILSBY, CRL BRISTOL
JASON OWEN LLANWARNE, CRL SURVEYS
PAWEŁ SAKWA, CRL CHESTERFIELD
KEVIN GILLBEE, CRL CHESTERFIELD
LEIGH HACK, CRL SURVEYS
DARREN DREW, CRL MITCHAM
MARK BRANDON, CRL CHESTERFIELD

PROMOTIONS...

MAREK PRZEPIORA, CRL MITCHAM - SENIOR TRADESMAN
ALAN WARDLEWORTH, CRL CHESTERFIELD - SENIOR TRADESMAN
ADAM DUBIEL - CRL FALKIRK - CONTRACTS MANAGER
CHRIS PRIBYL - BUXTON ASSOCIATES - DIRECTOR

snapshot

Midland Link Motorways Update

P25 Gravelly Hill

It's a full year since work started on the complex Gravelly Hill project. CRL's site team has now completed installation of replacement cathodic protection systems to 14 crosshead beams on various bridge structures at the famous Spaghetti Junction.

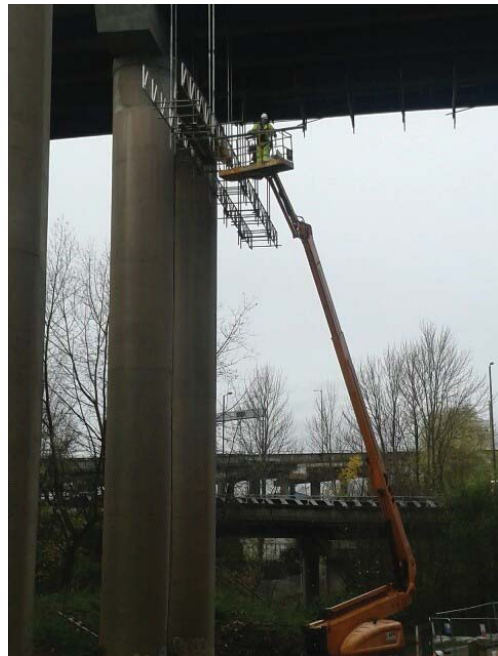
The final high-level scaffolding has been dismantled. Clearance of welfare units, stores, plant and equipment is underway from the four separate work sites under the motorway.

Highways England have commended the CRL site team for completing the work on programme, within budget, with zero lost time incidents, zero environmental incidents, and zero complaints from members of the travelling public. For such a complex and technically demanding scheme, the measurable performance indicators are truly excellent.

Congratulations to the site team for all their efforts in delivering a successful project

Image top right: dismantling of the final high-level underslung scaffolding at M6 Gravelly Hill

Image middle right: high scaffold at P25 Gravelly Hill project (under spaghetti junction)



P56 Wigmore Viaduct

Work is progressing well on the P56 scheme at Wigmore Viaduct. The project involves removing old coating based cathodic protection systems and installing new ribbon and sprayed concrete systems to 19 motorway support structures, under the M5 in Birmingham. 15 of the structures are now complete, and scaffolding is being dismantled. The final four structures are progressing well, with completion scheduled for the end of February 2016.

M5 Western Arm Project

CRL has undertaken a project as a subcontractor to Bam Nuttall, on the M5 southbound in Birmingham. This involves installing new cathodic protection systems to beam ends under the motorway, plus extensive repairs to the concrete decks. Many of these repairs are large sized, and fully through the deck, which means extensive formwork under the decks and large volumes of repair concrete.

CRL's team has used over 12,000 bags of Webergem Repair Concrete, with all concrete mixed on site on the closed carriageway. Typical daily pouring has been around 5 Tonnes per shift with a maximum achieved on one very busy day of almost 7 Tonnes.

The project has increased in size and scope as the extent of the repair work became apparent only when blacktop surfacing and waterproofing was removed by the main contractor. CRL's package has grown in value to over £1m.

CRL's work will be completed before Christmas.

Image bottom right: M5 Western Arm deck slab



snapshot

Drax Power Station



CRL Chesterfield region are carrying out works at Drax power station in Selby North Yorkshire.

The works involve structural steel installation, hydraulic jacking, resin injection, hydrodemolition and sprayed concrete works to the underside of one of the boiler hearths inside the station.

The works are going very well and we have already negotiated similar works to two more units within the station that will take us into the new year.

As with most projects in these environments the client demands and expects an extremely high level of safety and procedure compliance and is very happy with our performance to date with the promise of future works in their new financial year.

Thanks to CRL senior Foreman Alan Gill for his hard work and commitment.

Tower Hill refurb Societe Generale

Equilux has recently completed a major electrical install to floor levels 1, 4, 5 and 8 at 41 Tower Hill for Society Generale Bank. The project began on level 1 and rolled onto levels 4, 5 and 8, with a project value of £150k, including providing new power distribution to desks, alterations to the fire alarm system and lighting.

We were appointed to work with the fit out contractors (Paragon) and had to work in conjunction with others replacing partitions and new ceiling. This is Equilux's second project with the Bank for 'capital works' following our success last year at Bishops square.

The project ran very successfully, our familiarity with the building and with the client's working methods and practices being a vital part of our success.

The work, although not very technical, was very demanding with changes to the design occurring frequently requiring us to be very flexible with our work planning and attendance times.

We are now at the final stages of this project and have a satisfied client and have completed within budget and within the time scales as per the programme.

Once again congratulations to all who worked on this site and credit to Samantha Crowley who supervised the works from start to finish. This was her first major project and she performed very well, and has also gained valuable experience.

There is discussion of further works to Bishops square next year so hopefully our good work to date will stand us in good stead to secure this work should it go ahead.

Norwich MSCP

CRL are working on a City Centre multi storey carpark.

One December morning a group of CRL's employees were working on the upper levels of a multi storey car park when they saw a young woman in distress.

Two CRL employees (Drini Hazizi and Gentjan Cjapi) took swift action to prevent the woman from taking her own life. Drini and Gentjan looked after the woman until the emergency services arrived.

I would like to note that they felt that they could involve themselves without endangering their own lives.

The Police Officer in attendance said...

"Drini Hazizi and Gentjan Cjapi are heroes of the day!"

Centura Group would like to acknowledge Drini and Gentjan's act of kindness and express the company's pride in them and their action. Their quick thinking and actions most certainly saved this women's life.

Well done boys!

snapshot

Buxton Associates Update

We've had a busy year; we opened a new central London office in Farringdon this summer and are continuing to grow our team both in Mitcham and in Farringdon. The following highlights give an idea of the projects we've been working on.

Alice Holt Visitors Centre Phase 2

Following successful construction of the timber framed visitors' centre at Alice Holt Forest, for which we provided civil and structural engineering design services, we are collaborating with Re-format Architects on the next phase of the project. Phase 2 comprises the design of a new café building and the extension of an existing building into which a cycle hire centre will be relocated.

Wendover Woods

Following our success with Alice Holt, we have been appointed to provide the structural design of a visitors' centre in Wendover Woods for the Forestry Commission who are considering rolling out this scheme at all 350 of their sites across the UK. The proposed structure is a combination of steel frame and glulam beams to provide a cost effective solution that reflects its environment. The project is still in its early stages, with construction scheduled for Winter 2016/17.



Glebe School

Glebe School is a Special Educational Needs (SEN) school expanding to provide 100 extra places to students. For this a £3.6m scheme is underway, including a three-storey extension for which we've designed a steel frame structure with precast concrete floors, currently being built by contractor Lakehouse, with construction due to complete in Summer 2016.



Cavatina Point, Greenwich

We've been appointed by Telford Homes to provide structural engineering services for the refurbishment and re-fit of an existing commercial space into a 115 bed windowless hotel on the first and second floors of an otherwise residential building.



snapshot

Buxton Associates Update cont'd

Sidley Extra Care, Bexhill

Our work on this £11m scheme to provide high quality assisted living apartments for the elderly was featured in a previous issue. Since then, the main structure has been completed by contractor Rydon Construction and developer Amicus Horizon held a topping out ceremony in September to mark the occasion.



Clare Lawn Avenue

This large one-off house overlooking Richmond Park comprising an in-situ reinforced concrete frame for the main building and a long span steel frame over the swimming pool has been featured previously. We've been involved in this £3.3m project since 2012 and construction has now been completed.



Mitcham Road

Since 2012 we've been involved with this £2.6m development to demolish an existing 1950's two-storey office block and provide a new four-storey residential building, which has now been completed by Bugler Developments. The new structure comprises load bearing masonry with precast floor planks supported by mass concrete footings. To add value we recommended the retention and reuse of some of the existing building foundations.



Rendlesham Road, Hackney

We also provided Bugler Developments with structural design for Rendlesham Road, a three-storey residential building built on a brownfield site in Hackney. The structure is a combination of masonry, steelwork and precast concrete floors with spans up to 9.5m, supported by piled foundations. The £1.5m development has now been completed.



snapshot

Haslar Bridge, Gosport



CRL Bristol and Equilux combine forces on Haslar Bridge Gosport

On this nine span post-tensioned Haslar Bridge in the Gosport tidal estuary, which is a Site of Special Scientific Interest (SSSI), CRL carried out major sequenced concrete repairs to the eight number piers, together with the installation of an Impressed Current Cathodic Protection Scheme. CRL completed three times the original quantity of concrete repairs together with welding work to reinforcement. A high standard of repair finish was achieved with the flowable concrete using a formwork former strapped to the columns.

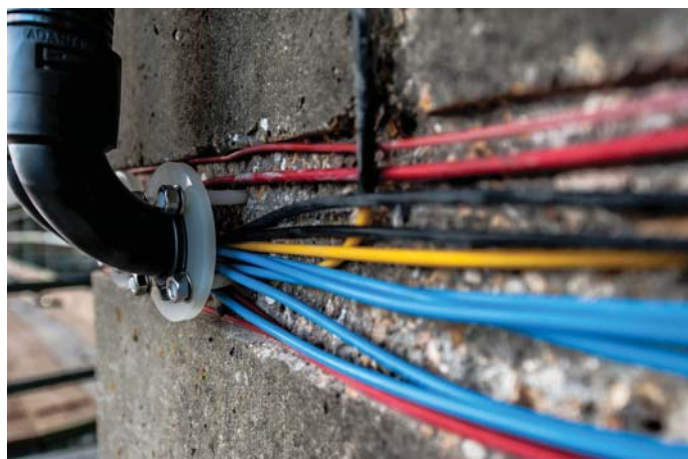
Other works included bonding and coating corroded bridge bearings

The columns, cross beams and abutments had in excess of eight hundred discrete anodes installed to cover 20 number zones of (ICCP).

Equilux, installed AC pillar boxes and provided connections to the main control ICCP equipment, they also installed all the junction boxes to the main control units and GRP cable trays that

spanned the bridge to carry the cables to both sides to operate the ICCP system.

The CRL site team of Robert Najcak, Mark Beddis, Adam Walas and Mick Vitol completed the works within the original programme with the CP system operating with no problems.



snapshot

Hart Shopping Centre Car Park, Fleet



CRL Bristol complete Hart Shopping Centre Car Park, Fleet

Concrete Repairs Limited (CRL) recently completed a complex refurbishment to the Hart Shopping Centre Car Park working closely with the centre management and Colliers International to a limited budget and time frame whilst maintaining a live car park throughout.

The works included replacing 2,500m² of failed coatings to the entrance and exit spiral ramps, level 1 exposed deck area, level 1-2 and 2-1 ramps, along with various high wear turning points and driving aisles.

Due to various sporadic leaks into the retail units below level 1 an electronic leak detection survey was undertaken highlighting defects within the asphalt substrate. These defects were individually treated and waterproofed with a

specialist fleece systems to extend the life of the asphalt substrate.

Further works included concrete repairs to decks, soffits, columns and parapet walls, application of single pack line marking to refresh the entire car park. Redecoration of all metal work, render, wood work, level 1 and 2 concrete surfaces and columns.



group gossip

Gerry Richardson Retires



I would like to mention just a few highlights of Gerry's long and illustrious career with CRL and Centura.

Gerry has always been a local lad, being educated at Riddlesdown High School and then going on to achieve an HND in Mechanical Engineering at Croydon Tech. During that same period which was between 1966 and 1972, Gerry worked for RMC designing and commissioning batching plants, Dor-Oliver on design and drafting duties and the Texaco as a sales engineer. In 1973 Gerry joined Tecalemit in Plymouth as their Southern Region Area sales manager, dealing with vehicle servicing equipment. He remained in that role for 11 years.

In 1984 and no doubt because of skills learned at RMC Gerry Joined John Lelliot Structural Renovations as a contracts manager, based in Raynes Park. Now some of you will recognise the name John Lelliot. Lelliots were a South London based contractor who unfortunately fell on hard times. Some of you may also recognise the name Structural Renovations. Gerry's boss at Structural Renovations was Kevin Coulman, who along with Gerry was one of the nicest and most knowledgeable people you could wish to meet. I don't say that about many of our competitors. Sadly Kevin is no longer with us, but Gerry was always attracted by that Concrete Repairs lot in Fulham! So he wrote to us in 1994 to see if we had any vacancies. Unfortunately, we were waiting, aren't we always, for some large projects to land, but they didn't.

However, we were able to seal the deal in early 1996 when Gerry was able to join us as contracts manager. We employed many young engineers in those days and so it was great to be able to bring Gerry in who already had 12 years' experience in the weird and wonderful world of structural repair. Gerry started work with us on general repair projects in London and the South East with several on London Underground projects as I recall.

But every few years the life of a contractor gets just a little bit of luck and at that time ours was at Dungeness Nuclear Power Station in Kent. The station required a comprehensive programme of structural repair and extra strengthening against earthquakes, which are of course very common in that part of Kent. Gerry spent 3 years at Dungeness which turned out to be one of our most successful projects ever. Of course once our work was complete the station was destined for closure and as far as I know never suffered any nasty effects of earthquakes.

Carrying out work in an operational Nuclear Power Station is subject, thankfully, to some very stringent rules and procedures that cover every aspect of Health, Safety, Quality and the Environment. Whatever assessments and procedures that we may come across today they were already in place in Dungeness 20 years ago.

The expectations of our industry in those days was to be accredited to BS5750 which was a measure of quality management. Some contractors were proud of achieving that standard. At CRL we wanted more, we wanted the triple crown of Safety, Health, Environment and quality. With his experience who better to lead us to that Goal than Gerry. After completing at Dungeness Gerry agreed to be our SHEQ manager and embarked on the monumental objective of achieving the triple accreditation for CRL. Many companies have achieved that today but back in the early 2000's it was rare. But Gerry achieved the goal set for him and CRL were awarded the triple accreditation in 2003. If I am not mistaken we may have been the first company in our sector to gain that accreditation. Please be under no illusion as to just how much hard work and commitment Gerry had to put in to that achievement. And please also understand that since then Gerry has led us through our annual accreditations and updates with a 100% success rate, so no pressure on Jason then!

I cannot understate the importance of our SHEQ system. I know that many think it a chore to comply and document how we manage our operations in this company. But SHEQ accreditation is an external confirmation of our professionalism our commitment to our clients and our respect for our staff.

I know that Gerry has at times been a little frustrated with how our systems may be viewed by our staff, especially when they are busy. But trust me on this, the external perception of our company would be nowhere today without what Gerry has achieved for this business.

But now Gerry deserves some more time for himself and with interests outside of work so varied, he will not be bored. In the past he has been a squash champion, an accomplished diver, downhill skier and a marathon contende, he enjoys golf and a keen interest in sport in general.

We all owe Gerry a huge debt of gratitude in recognition of what he has achieved and given to this company. Our best wishes for a long happy and healthy retirement.

Tony Rimoldi
Group Chief Executive



group gossip

Lighthouse Club Fundraising Event

Lighthouse Club – cheque handover

The Lighthouse Club has recently benefited from a fundraising event held at CRL's P25 Gravelly Hill site. A cheque for £1400 was presented to Bill Hill, Chief Executive of the Lighthouse Club, by Surjit Dillon, Site Manager for Kier Strategic Highways.

CRL's Paul Quinlan and Andy Yelland were instrumental in arranging a charity raffle and barbeque which was held on site recently. Paul and Andy managed to extract some great prizes for the raffle from CRL's key subcontractors and suppliers. CRL provided the hot curry buffet, hog roast and non-alcoholic drinks plus several prizes. The event was well supported by CRL and Kiers site workforce, staff and our supply chain partners.

Bill Hill took time to describe the good work done by the Lighthouse Club, in particular, the money raised by us will go towards supporting their 24-7 Construction Industry Helpline, which is available to anyone in the Construction Industry who may need help and support in times of personal crisis.

Congratulations to CRL's site team for arranging the event and generating such a good sum of money, for such a worthy cause.



Presentation of £1400 cheque to Bill Hill, Chief Executive of the The Lighthouse Club, the Construction Industry's Charity.

Gerry Lister

Christmas spirit

As some of you may or may not know, I am in a band of saxophonist for Sutton College. On Sunday 13th December we played Jazz, Blues and Christmas Songs to spread festive joy through christmas shoppers in the St Nicholas shopping centre in Sutton.

Sharon O'Sullivan



group gossip

Congratulations...



A big congratulations to two of our employees Relinda & June Bool (Centura), as they welcomed baby boy "Jurell" to the world on Friday 18th September, weighing 7lbz 13oz.



Congratulations to Carl Fox (CRL Chesterfield) and his wife Rebecca who tied the knot earlier this year on the 2nd Oct.

There were lots of CRL faces on the day and a great best mans speech delivered by Carls best mate Kevin M Gough (CRL Chesterfield)

We wish them every happiness together.

ASK TONY

Do you have any questions you would like answered straight from the top? Then ask Tony!

Email / fax your questions in and Tony will reply.

tonyrimoldi@centuragroup.co.uk for email or fax your questions on 020 8288 4839

