

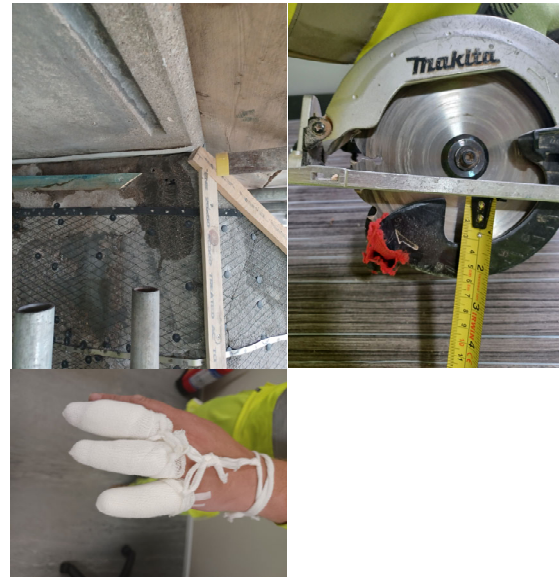
| | | | |
|-------------------------|---|-------------------------|-----------------------|
| ALERT TOPIC | Hand Injury | ALERT REFERENCE: | CRL 04072023 |
| TARGET AUDIENCE: | Regional Managers Site Managers Site Engineers and Supervisors Operatives Other Interested People | AUTHORISED BY: | N Roper T Grierson |
| DATE OF ISSUE: | Tuesday 4 July 2023 | DISPLAY UNTIL: | End December 2023 |

INTRODUCTION

An operative on a CRL Highways site was installing timber batten to contain spray concrete.

Though the investigation is ongoing, from information learned so far;

- the operative was cutting a piece of 2"x1" timber using a cordless circular saw
- the timber was not securely held down on a workbench
- when the saw was applied to the timber it made contact with his left hand cutting three fingers resulting in a visit to A&E and receiving stitches.



REASON FOR ISSUING THIS ALERT

To promote safer working and to prevent a reoccurrence of injury.

CONCLUSIONS AND DISCUSSION POINTS

Though the injury in this instance resulted in cuts requiring stitches, the outcome could have been much more serious.

remind people to ensure that;

- Any timber being cut should be suitably held down on an appropriate workbench.
- Use the correct saw i.e., a handsaw may be a better option.
- Visually inspect tools and equipment before use
- Only use tools and equipment that you are competent to use.
- Ensure that adjustable blades are set to a minimum depth for the task.
- Keep any loose garments away from the blade.

If you have any concerns with the above points, please discuss with your line manager.

SAFETY ALERT

Please communicating the contents to your site teams as appropriate
Record this briefing on the form below and retain in your contract file.

SHEQ ALERT BRIEFING RECORD

| | | | |
|-------------------------------|-------------|--------------------------|--------------|
| ALERT TOPIC: | Hand Injury | ALERT REFERENCE: | CRL 04072023 |
| PROJECT NAME: | | DATE OF BRIEFING: | |
| BRIEFING DELIVERED BY: | | | |

The following people have signed to confirm receipt and understanding of this SHEQ Alert:

| NAME | EMPLOYER | EMPLOYEE ID | SIGNATURE |
|------|----------|-------------|-----------|
| | | | |
| | | | |
| | | | |
| | | | |
| | | | |
| | | | |
| | | | |
| | | | |
| | | | |
| | | | |
| | | | |
| | | | |
| | | | |
| | | | |
| | | | |
| | | | |
| | | | |
| | | | |
| | | | |
| | | | |
| | | | |
| | | | |
| | | | |
| | | | |
| | | | |
| | | | |
| | | | |
| | | | |
| | | | |

If you have any SHEQ issues that you wish to discuss, please contact your supervisor, line manager, or a member of the SHEQ team.