

Exciting Times Ahead

Issue 19
December 2021



Robins Wharf on the Thames

We are approaching the end of 2021 and of course looking forward to a Christmas break with friends and family.

The past few months have seen a changing marketplace as we move on with our management of the Covid pandemic and continue to understand the effects of Brexit.

2021 started with another lockdown as the cases of Covid once again began to increase. Thankfully that period also marked the start of the UK's vaccination program, which of course has continued throughout the year. By now most of you will have been vaccinated at least once and some of us have now received booster jabs. Whilst daily infection rates continue at high levels, it appears that public immunity because of the vaccination program is improving. We have fewer serious cases and importantly our hospitals are not overwhelmed. Very recently we have learned of a new variation of the virus. I am sure that we will not be rid of Covid for some time but as a country and in business we must aim to get back to work and achieve some normality.

The Centura year, which ended in June, showed a strong performance. Overall sales are certainly getting back to normal and our cash position continued to improve. Our subsidiary companies now contribute over 10%

of sales annually which is especially pleasing.

The big news came in late summer. The future strategy of CRL's biggest client, National Highways, is to develop a national framework for highway maintenance. Up until now procurement has been in regional areas. This new opportunity covers all English Highway routes. The CRL Highways team led by Dave Burgess spent many months putting together our bid for the Scheme Delivery Framework (SDF). I am very pleased to confirm that we had a "Clean Sweep" securing future work opportunities literally from Lands End to the Scottish Border. This success will provide a huge benefit to CRL for many years to come.

Such an achievement is a wonderful example of how well we work together as a team. We are seeing other opportunities for repeat work and renewed frameworks across all Centura businesses. There continues to be synergies amongst our companies leading to opportunities for all.

To be successful on these major frameworks is no longer just a review of our pricing structure. Indeed the submitted price is often not the most crucial factor. The performance of a business is now more usually judged on its environmental

performance, its safety record, its impact on local communities and its social awareness. Centura group continues to demonstrate how well it understands the importance of these measures and how well it motivates and encourages its employees.

These new contracts will mean more people will join our teams. There will be career opportunities for all. We will invest in training and development for everyone. Our regional teams will continue to grow with recruitment at every level. These opportunities demonstrate the respect that the marketplace has for Centura Group companies. The development of our employees demonstrates the respect that the Group has for all of you.

Our future prospects are exciting. We have work secured across all regions for several years to come. There will be a lot of hard work to manage these projects which will be challenging. There will also be job satisfaction and the opportunity to innovate.

The past 2 years have been unprecedented to say the least. We have adapted to the Brexit changes, especially with cost increases and resource availability. We have learned to understand Covid 19 and especially how to protect ourselves and those around us. But above all we have all pulled together as the best team in the business.

I wish to thank you all for your loyalty through these past months. The results of that loyalty are there for everyone to see.

I would like to wish you all the very best for the Festive Season and that you take the time to relax with family, friends and loved ones.

We have exciting times ahead.

Tony Rimoldi
Chief Executive

Samuely
Consulting Structural Engineers

Lifespan Structures Ltd

CRL
SURVEYS LIMITED
structural & building assessment

TiFire
FIRE SAFETY SERVICES

equilux

buxton
CONSULTANTS

CRL
CONCRETE REPAIRS LIMITED
multi-disciplined structural renovation

the numbers

A regular feature in this newsletter is to publish a scorecard showing how the group is performing. The following tables have gathered together all the latest information from the current financial year.



CENTURA GROUP

Qtr 1 Jul - Dec 2021

Customers & Markets

722

No. of tenders submitted

£59.7m

Value of tenders submitted



313

No. of new contracts awarded

£12.5m

Value of contracts awarded



Training, Quality & H&S

246,750

RIDDOR free man hours

96%

CSCS carded site workforce

98%

Employees H&S Training Compliant

40%

H&S Inspections Key Performance Indicator



Operational

100

% of performance questionnaires showing client satisfaction

155

No. of contracts in progress

110

No. of contracts ahead of target

Financial & Stakeholders

Turnover year to Dec



Profit year to Dec



Overhead costs year to Dec



Cash Flow



Group Business Plan Sales for Year to June 2022

	Target	Total
Concrete Repairs Ltd		
Bristol	£7.3m	
Chesterfield	£7.0m	
Chesterfield Highways	£5.5m	
Falkirk	£7.25m	
Mitcham	£7.4m	
Australia	£3.3m	£37.75m
CRL Surveys Ltd	£1.5m	£1.5m
Standmark Ltd	£0.21m	£0.21m
FJ Samuely Ltd	£0.4m	£0.4m
Equilux Ltd	£1.5m	£1.5m
TL Fire Ltd	£0.2m	£0.2m
LifeSpan Ltd	£0.4m	£0.4m
Total Sales		£41.96m

group gossip

The Group would like to welcome...

Abigail Tomelty, CRL MIT
 Adam Anderson, CRL FAL
 Adis Tusku, CRL FAL
 Adrian Browne, CRL AUS
 Alejandro Salazar-Restrepo, CRL BRI
 Alicia Tomkins, CEN
 Amy Toop, CRL SUR
 Anthony Davies, CRL BRI
 Brad Davies, CRL BRI
 Brendan Molin, CRL AUS
 Callum Nason, CRL SUR
 Calum Campbell, CRL FAL
 Charlie Nadin, CRL CHE
 Colin Hayes, CRL CHE
 Craig Robert Millar, CRL FAL
 Damien Fleming, CRL FAL
 Damien Nicola, CRL AUS
 Daniel Dyshniku, CRL MIT
 Daniel Molin, CRL AUS
 Eric Lange, CEN CEN
 Eric Lee, CRL CHE
 Fidel Matondo, EQU
 Gareth Matthews, CRL CHE
 Ian Moogan, CRL CHE
 James Bower, CRL CHE

James McGovern, CRL FAL
 James Munn, CRL FAL
 Jason Graf, CRL AUS
 Jonah McMurray, CRL AUS
 Jonathan Ravenscroft, EQU
 Kieran Miller, CRL FAL
 Koffi Agbomso, EQU
 Kris Taylor, CRL AUS
 Lance Bayley, CRL AUS
 Lewis Peter Booth, CRL CHE
 Luke Lord, CRL AUS
 Manjula Perera, CEN
 Michael Chamberlain, CRL BRI
 Michael Crerand, CRL FAL
 Michael Kieran, CRL CHE
 Miri Hoxha, CRL MIT
 Neville Thomas, CRL BRI
 Nicholas Purser, CRL AUS
 Owen Cherrie, CRL FAL
 Reece Cloete, CRL CHE
 Robbie Mullen, CRL FAL
 Robert Piciocco, CRL AUS
 Ryan Chesney, CRL SUR
 Ryan Galvin, CRL SUR
 Ryan Hendrie, CRL FAL

Ryan Picker, CRL SUR
 Ryan Stedman-Hoyte, CEN
 Scott Anderson, CRL FAL
 Sean Richey, CRL AUS
 Sengrong Park, EQU
 Silviu-Mihai Mihalache, CRL BRI
 Simeon Pickles, CRL SUR
 Stephen Jackson, CRL CHE
 Suzanne Morgan, CEN
 Tristan Pease, CRL SUR
 Waldemar Niedzielski, CRL CHE
 William (Bill) Hicks, CRL MIT
 William Smith, CRL BRI

Say goodbye to...

Alexander Lawrence, CRL FAL
 Alexandru Nichita, CRL MIT
 Artur Sikora, CRL BRI
 Arun Bagshaw, CRL BRI
 Bartek Wisniewski, CRL MIT
 Brad Davies, CRL BRI
 Bradley Linnen, CRL MIT
 Callum Nason, CRL SUR
 Damian Zaluska, CRL MIT
 Daniel Dyshniku, CRL MIT
 Daniel McCormick, CRL FAL

Daniel Wooderson, EQU
 Dariel Fernandez Garcia, EQU
 David Parusico, CRL AUS
 Dhrew Parmar, CEN
 Dylan Bain, CRL MIT
 Elizabeth Tyler, CRL CHE
 Elliot Etherington, CRL CHE
 James Bower, CRL CHE
 Jason Brown, CRL BRI
 Joss Davies, CRL BRI
 Lee Pearson, CRL CHE

group gossip

Say goodbye to... (continued)

Lewis Beddis, CRL BRI
Mergim Shehu, CRL MIT
Michael Jones, CRL FAL
Mohammad Al Hujaj, CRL SUR
Namo Rashid, CRL BRI
Owen Cherrie, CRL FAL
Parweza Trotman, CRL CHE
Petre Andreescu, CRL MIT

Roger Batterham, CRL CHE
Ryan Stedman-Hoyte, CEN
Ryan Walker, CRL CHE
Sengrong Park, EQU
Stephen Jackson, CRL CHE
Thomas Purchase, CRL BRI
William (Bill) Hicks, CRL MIT

Congratulations on promotions to...

James Noonan, CRL AUS
Cory Mason, CRL BRI
Lance Painter, CRL BRI
Gary Groenewald, CRL BRI
Gavin Atkins, CRL CHE
Nigel Jeffery, CRL CHE
Mark Cloete, CRL CHE
Gavin Lyons, CRL SUR
Lukasz Chudy, CRL SUR
Simon Bladon, CRL SUR
Danny Sykes, CRL SUR
Sean O'Connor, CRL SUR
Simeon Pickles, CRL SUR
Michal Wrzosek, CRL SUR
Georgijus Asanovas, CRL SUR
Andrew Campbell, CRL FAL
Kierran Gardner, CRL FAL
Calum Campbell, CRL FAL
Fabian Prochnicki, CRL FAL
Brian Shearer, CRL FAL
Stewart MacLennan, CRL FAL
James McGovern, CRL FAL
Karen Cummins, CEN
Adam Kasperczyk, CRL MIT
Alin-Catalin Gocea, CRL MIT
Iulian Manuel Patru, CRL MIT
Miri Hoxha, CRL MIT

Construction Project Manager
Tradesperson
Tradesperson
Senior Tradesperson
Tradesperson
Site Manager
Supervisor
Trainee Manager
Trainee Manager
Director
Survey Technician L3
Regional Manager
Survey Technician L1
Regional Manager
Survey Technician L2
Site Engineer
Tradesperson
Tradesperson
Supervisor
Supervisor
Contracts Engineer
Senior Tradesperson
Group Training Manager
Senior Tradesperson
Senior Tradesperson
Senior Tradesperson
Senior Tradesperson

Awards

CRA Concrete Society Award

CRL was recently awarded a 'Highly Recommended' for their work on the Durdham Water Tower in Bristol at the Concrete Society Awards Dinner. The Awards which celebrates excellence in the use of concrete attracts over 400 of the industry's professionals and is the longest running awards in the UK Construction Industry.

The refurbishment of the Durdham Water Tower was a complex project made all the more difficult by the confined space roof access into the tanks some 20m above the ground, the Covid restrictions that came into force during the contract and the strict deadline to return the asset into service.



CRA Project of the Year Award



... and again CRL received a 'Highly Recommended' award at the recent CRA dinner held at the Radisson Blu Hotel in Bloomsbury, London.

The award was a joint submission with Fosroc for the works carried out on the Milford Towers project in London. The project, valued at £1.6 million and carried out for Lewisham Homes, was made particularly difficult by the fact that the estate was fully occupied during the course of the works necessitating daily liaison with all the tenants.

Industry Peers Recognise CRL's Learning & Development Strategy

CITB, the training body, has nationwide training groups and we are a member of a number of these. The groups keep the Training Department updated on scheme changes, provide networking opportunities and often offers access to subsidised courses.

The London training group (LRCTG) has approximately 50 member companies. We were proposed for the category of '**Company Committed to Training**'. No surprise that this was the category with the most nominations.

One winner was stipulated per category and this time we were pipped at the post. But the panel made a point to recognise our efforts and Karen Cummins & Sarah Richardson were pleased to accept the Highly Commended award at the presentation in central London. We're going for gold next year!



CRL open new office in Middlesbrough



CRL are pleased to announce the opening of our new office in the North East. With an increasing client base in the region following the successful completion of some exciting projects, it is the perfect time to open our Middlesbrough office. The office/region will be run by our Northern Regional Manager, Matt Robinson, supported by his highly skilled team.

Site Observation App

The CRL site observation App is now available. Please follow the details on the attached poster that explain how to access the App, how to complete and submit observations relating to Safety, Environment or Quality as well as innovations.

The poster can be downloaded [here](#)

The dashboard can be accessed [here](#)

The form can be accessed [here](#)

The SHEQ group will review the observations on a monthly basis to identify any trends and key learning points.

SITE OBSERVATION APP

YOU ARE OUR EYES AND EARS

- IF YOU SEE SOMETHING ON SITE AND YOU THINK IT'S NOT RIGHT OR UNSAFE, FIX IT IF YOU CAN, AND USE THE CRL REPORTING APP TO TELL US ABOUT IT
- IF YOU SEE SOMETHING ON SITE THAT YOU THINK IS AN EXAMPLE OF BEST PRACTICE, A GREAT IDEA, SNAP IT AND SHARE IT USING THE APP
- JUST SCAN THE QR CODE ON THE RIGHT WITH YOUR PHONE CAMERA AND YOU WILL BE TAKEN TO THE APP, FOLLOW THE INSTRUCTIONS AND JUST CLICK SUBMIT
- THIS APP CAN BE USED TO REPORT ANYTHING
 - SH&E ISSUE OR NEAR MISS
 - QUALITY ISSUE
 - EXAMPLES OF GOOD PRACTICE
 - INNOVATION

THE INFORMATION GATHERED USING THIS APP WILL BE ANALYSED AND USED TO MAKE IMPROVEMENTS AND TO SHARE BEST PRACTICE.
NO PERSONAL DATA WILL BE SHARED FROM THIS APP

SCAN QR CODE BELOW

www.crl.uk.com

Any high risk items will be distributed immediately to Directors and RMs to ensure they are actioned.

Westfield Job Fair

In October some of our team attended the Westfield Job Fair. During the 2 days we had a lot of interest via people visiting the stand. Not just by individuals looking for a job however, but also by charities that help to get people back to work who have either been made redundant or gone through a challenging time in their life and some who suffer with mental illness. Meetings have been arranged with 'Shaw Trust' (a Government Backed Charity who help people to get back into work) and also 'Reed In Recruitment' which is an organisation similar to the 'Shaw Trust'.



Performance & Development Reviews

We have been focussing on ensuring all employees have a structured Performance & Development Review.

If you have yet to receive yours, you can expect to do so soon.

All comments are read carefully. Notable trends are discussed at senior management level. Individuals remain anonymous.

Training requests are logged and forwarded to your Regional/Department manager.

Examples of courses booked as a result of P&D review discussions include First Aid, Telehandler, Contractual Awareness and Cathodic Protection.

IT training is always popular – we are looking at the most effective way to deliver this.

Training needs to benefit both the employee & company and be cost effective. It isn't possible, regrettably, to agree to every request.

Please speak to your manager to discuss a date for your outstanding review.

For questions on the P&D process, contact Karen Cummins, Training Manager – kcummins@centuragroup.co.uk

Tel: 0208 288 4828

CRL Operative – Performance & Development Review Form				
Employee Name: _____		Region: _____		
Job Title: _____		Reviewer: _____		
Review Date: _____				
SPECIALIST SKILLS	Is the operative deemed competent? (Y/N)	Experience in this skill (Month/Years)	Used this skill within previous 2 years? (Y/N)	Indicate which TWO deemed as core skills
Visual Survey & Marking Up				
Concrete Repair Preparation				
Concrete Repair Finishing				
Poured Concrete Repair				
Concrete Coatings Application & Finish				
Rendering Fairing Coats & Plaster				
Resin Injection				
Grouting				
Waterproofing				
Car Park Deck Coatings				
Cathodic Protection Systems				
Carbon Fibre Plate Installation				
Carbon Fibre Wrap Installation				
External Wall Insulation: Preparation & Boarding				
External Wall Insulation: Render Finishes				
Other:				
Is there any particular skills he/she would like to develop further in, over the next 12 months?				
		a Centura Group company		<small>Updated: May 2021 Reviewed: May 2021 Page 1 of 3</small>

Royal Mail Group

Northolt Delivery Office

RMG Northolt DO is to be mothballed and relocated to a new site. The existing POL (Branch Office, Post Office Ltd) is to remain and the associated shared services shall remain live to ensure services to the occupying tenant remain live when the rest of the building is isolated and mothballed.

Equilux's team are deconstructing and decommissioning the delivery office's heating system, hot and cold water, ventilation and gas services.

We are currently installing a new distribution board, new fire alarm panel, new electric heating within the Post Office premise to allow full independent heating service within the tenant retail area. All works are being done out of hours around the Post Office operational hours.

This was a 4 wk programme, and will be handed over to the client on the 17th December.



Brighton Mail Centre

Equilux was appointed by Vinci Construction to conduct the essential mechanical and electrical maintenance works to Brighton Delivery Office. Our works consist of inspection, testing and remedial works for the transformer, the main LV switchboard, the passenger goods lift, the stand alone heating system, electrical services remediation (based on the 2020 year electrical testing and inspection certificate), the lighting protection system and all the associated building works.

We will also be restoring ventilation and heating service across various areas, installing additional wall/window/ducted reversible ventilation fans and heating service via the refurbished air handling plant.

The works will commence in the first week of the new year.



Snapshot... What's happening in Australia

West Gate Bridge

CRL Australia are pleased to announce we have been awarded West Gate Bridge waterproof membrane replacement works for the third successive year. CRL secured the contract to complete 2800m² of captive shotblasting, the application of three-coat Matacyl WSM Waterproofing System and third-party testing.

Work will commence on the 26th of December in lane 4W with the existing road surface and membrane being removed before we commence blasting on the 27th of December. Well done to the team for their hard work on the bridge so far and securing the contract for a third year running!



New Colleague Welcome



We are pleased to welcome Robert Piciocco, the newest member of CRL's ever-expanding Australian team. Robert is a Site Manager with over 20 years' experience in civil, commercial and industrial construction. He also has experience in concrete and steel structures, concrete remediation, carbon fibre strengthening and industrial coatings.

Having worked with Robert before, we know he will be a fantastic addition to our team to help with the continued growth and success of the business and will be essential to help plan future strategies. We are delighted to have Robert onboard and are excited to start working with him!

New Toys

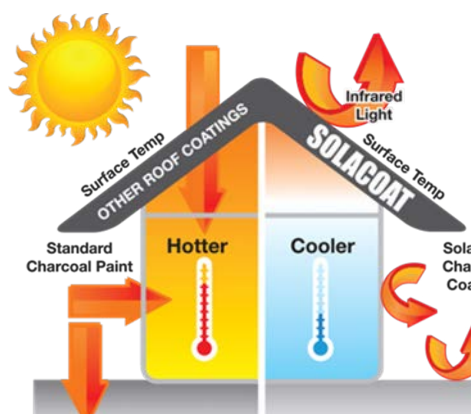
CRL has just received two Ford Ranger Wildtraks for Queensland Site Manager Sean Johnson and Melbourne Site Manager Kris Taylor.

We're sure they will enjoy using them!



CRL are proud to announce that we are now national applicators to selected markets for SOLACOAT – the Worlds Best Heat Reflective Coating.

What is **SOLACOAT**?



SOLACOT is an Australian designed and manufactured water-based acrylic heat reflective coating system that reflects the solar rays away from substrates, reducing internal temperatures and electricity cooling costs. Once applied, SOLACOAT provides a protective cover that shields roofs and walls from thermal shock, stress and degradation, increasing the asset lifespan. It also allows for the use of darker colours while still limiting heat absorption. We are pleased that by using SOLACOAT we will improve asset quality and resilience, while reducing costs, maintenance needs and environmental impact.

A Year in CRL Surveys ...

Another year bites the dust. It's been another busy one, with some changes in personnel, but overall a successful one, and surprisingly it's generally been fun!

As a business, according to my generally poor database searches, we have so far responded to 576 Tenders, with a total value of £5.74m, which have generated 158 contracts, with a total value of £1.26m. A success rate of around 22% (by value) or 27% (by number), so let's go by number). We are continuing up to the wire, receiving orders almost daily, with some of my team working during the Christmas Shutdown. Unlike previous New Years we have some large projects stacked up and waiting for us when we get back after Christmas. When I started this wee job, planning required looking days ahead, now we are looking months ahead, like the grownups in CRL.

A few highlights:

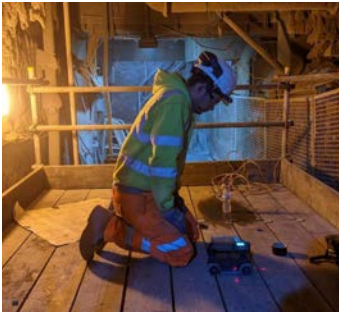
In **Scotland and now the North of England**, Sean O'Connor has had some impressive projects, including dams for SSE, power stations, effluent treatment plants and

bridges. Sean always seems to get the most picturesque of sites, often in the back of beyond, but with the other side of the sword he has the weather... horizontal rain, sleet, and snow in winter, vertical in summer.

Further South, in **England**, Nigel Pierce and Michal Wrzosek were also awarded some pretty decent contracts, including car parks, historic buildings, commercial buildings, more bridges and sewage treatment works (living the dream!).

North Wales has traditionally not been a big market for us. However, over the last 12 months we have become familiar (for me reacquainted) with the A55 Coast Road and (on a motorcycle) the sublime A5 through Snowdonia. Projects have included some foundation bases to transmitter masts, bridges and some new build structures at Bodnant Gardens.

So far so good with targets for the FYE, with the workload on the books inspiring confidence that 2022 should be another busy one.



CRL Scotland win refurbishment of Iconic Netherdale Stand

CRL Scotland has been awarded a contract from Scottish Borders Council for the refurbishment of the iconic Netherdale Stand in Galashiels. The initial contract award is for just over £1m with a further £300 - £400k expected once the CP system and the floodlighting have been developed and instructed.

This amazing concrete structure, designed by Peter Wormesley, was constructed in 1964 but has been out of use since 2018 due to structural safety concerns.

Early on in this project's journey from concept to contract, CRL Surveys crawled all over the stand and produced a comprehensive report on the condition of the structure. This report has been used extensively to produce the contract documents for the project and to quantify the repairs to the structure. This should prove beneficial for the project overall as there should be few surprises as works proceed.



CRL have been commissioned to refurbish this category A listed structure using strict conservation principals to return the stand to as close to its original condition as possible.

Once the repairs are complete and the structural integrity of the stand is returned, this will allow it to once again hold its full compliment of 500 Gala Fairydean Rovers supporters giving them a great view of the games from this magnificent stand.

This project will be managed by **CRL** contracts manager Adam Dubiel and for this project we have imported some southern restoration expertise in Tony Parsons from the Mitcham office. Tony has been involved in the project from the start and will lead our site-based team for the works.



We hope to get started on the project early next year with expected completion in the autumn.

This will be a challenging project involving multiple stakeholders including the club users who will still have the use of the facilities during the refurbishment works. This will involve some careful daily management and planning to ensure the works can progress whilst maintaining safe unhindered access to the club.

The site team will produce regular updates on the progress of this exciting project via our intranet homepage with the first one planned for when the impressive scaffold structure, providing access to the underside of the cantilever roof, is completed.

A38 Almondsbury Deck Refurbishment

CRL Bristol have recently commenced work as Principal Contractor on what is expected to be our last major project under the Highways England CWF framework in the southwest. CRL Bristol will continue working in the southwest with Highways England (now National Highways) under the new SDF framework.

The site is on a critical commuter and local traffic route into Bristol, passing over the M4 and close to the M5 Junction 16 and the Almondsbury interchange. Due to this it has taken almost two years of Early Contractor Involvement to develop the design and phasing of the work and resolve all logistical issues by working with our client and other CWF framework suppliers.



The project involves hydro-demolition to large area of the deck and construction of new over slabs to complete similar works previously completed 20 years ago. Further works also involve concrete repairs, parapet repairs, waterproofing, movement joints, new kerb drains and complete resurfacing

One major issue has been completing works less than a metre from the adjacent live traffic. This required a full temporary works design to construct suitable containment for the hydro-demolition operations. The scaffold itself also had to be built during full night time closures of the A38 to ensure the safety of the scaffold team.

Our site team led by Neville Thomas have had to operate at all hours to establish the site and get these works underway to achieve a tight program, we wish them every success in bringing this challenging project to a safe completion.

M25 Survey Works

The Mitcham office (in conjunction with CRL surveys) was recently awarded a contract to survey 12 Bridges in 4 weeks all around M25. The aim of the survey was to establish if there was any damage to the structures which would require repairs in the near future.

All works were required to be carried out at night once the traffic flow had reduced to an acceptable flow (not easy to achieve on the M25). Meticulous planning was required because of the live traffic situation with Osborne supplying the traffic maintenance. This necessitated careful collaboration between our 2 companies to complete the works in the short programme.

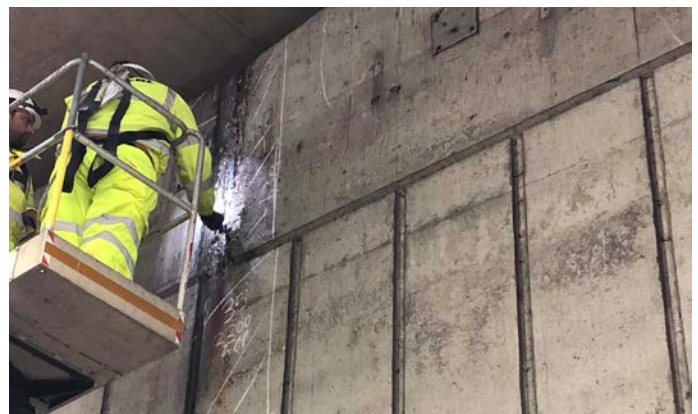
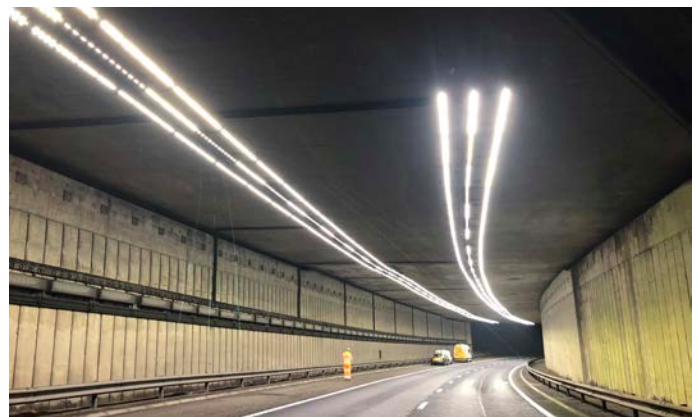
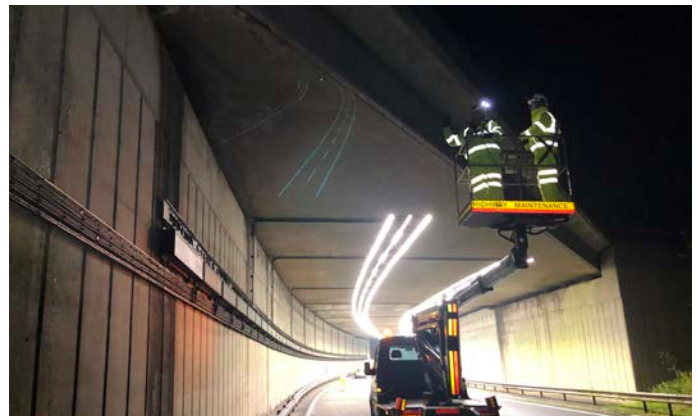
In order to assist us with identifying the structures and the defects, Osborne provided us with previous surveys so we had a head start and knew roughly where some of the repairs was located. However, we were still required to survey all the exposed concrete areas again.

All the works were carried out from MEWP's with our brief being to hammer test the structures, compile detailed drawings indicating our findings, as well as quantify the size and number of defects.

In addition all the defects had to be photographed as evidence of the repairs and damage we found on each of the structures. Any areas where concrete had started to spall was 'made safe' and the exposed reinforcement was painted with a zinc rich primer to protect it until proper repairs can be carried out.

At the end of the project all findings were compiled into a detailed report, with recommendations, so the client, M25 ConnectPlus, can move ahead and implement a planned programme of works to carry out the repairs necessary.

It was comforting to find that the majority of the bridges only had a few defects from impact damages due to vehicles hitting the top soffit or beams of the bridges. However, it was noted that some of the structures were suffering badly from rebar corrosion and had extensive spalling taking place over numerous areas.



Charity Events

Christmas Jumper Day



'Save the Children's - Christmas Jumper Day'

On Friday 10 December, the Centura Group took part in Save the Children's Christmas Jumper Day. People were asked to donate monies to support children in the UK and around the world. By taking part we hope we will be doing our part to help kids who don't have the basics they need to survive – like food, school, or medicine – as well as helping them to start seeing the magic in the world again ...

Thank you to all who took part (by wearing a Christmas jumper!) and to those of you who donated to this worthy cause! The total raised stands at **£143.00** (but we are still awaiting confirmation of the total donated by text!)



MacMillan Coffee Morning

CRL's Mitcham office recently hosted their 'MacMillan Coffee Morning'. The event was well supported with more than sufficient cakes being donated on the day. It is believed that everyone in the office was eating cake for the rest of the week!

It was also well attended with all the staff taking the opportunity to come out of their offices and chat and catch up over a cup of tea / coffee and a nice slice of cake.

More importantly, people were very generous with their donations and in total, we raised £225 for a very worthwhile cause.

Thank you to everyone who took part ...



**MACMILLAN
CANCER SUPPORT**

£ 225.00

RAISED FOR MCM2020114090

Community Engagement

Access to Swim Programme – Dunes Leisure Centre, Southport

In October, CRL launched the Access to Swim Programme at the Dunes Leisure Centre, Southport which was developed with our client, Sefton Council as part of our work on Dunes Splash World.

The programme provides a free 10-week course of swimming lessons along with swimwear, goggles and towels to disadvantaged children and children in care who may otherwise lack to the opportunity to learn to swim or access a swimming pool.

CRL, alongside our suppliers - Mapei, AMB Technical Ltd, VI Distribution, Industrial Coating Services, QED Scaffolding and Prema Energy Ltd - were able to fund the programme. Around 30 children are participating in the programme currently, with the view to launch it again in the new year and give even more children the opportunity to learn to swim.

The programme has gone down well with Sefton Council: "The opportunity to provide these lessons for disadvantaged children in care who have not had the opportunity to attend anything like this before is invaluable and I would like to say a massive thank you to CRL and their suppliers for their philanthropy."

Sefton Council have reported that the programme is running smoothly and has been well received by the children. We look forward to hearing more feedback when the first batch of lessons come to an end.



CRL vs Fortem charity football match



Back in September, CRL Chesterfield took on Fortem Solutions Limited in an 11-a-side charity football match and were narrowly beaten in a 16-goal thriller! The game was in aid of CRASH – who help other homeless charities and hospices with vital construction projects – and Mind – the mental health charity.

CRL players, colleagues, family and friends raised an amazing £870 from sponsorships and donations. CRL matched this making the total amount raised £1740!! Fortem did their own fund raising efforts so the overall money reaching our charities will be even higher!

A huge thank you must go to all the players who travelled from across the region to represent CRL and generously made donations and collected sponsorships. Without them, we would not have been able to raise so much money for our charities and have a great afternoon in the process.

We are already looking forward to the rematch next year!

Community Engagement

Chandag Infants School – ‘Small World’ Project

In August, CRL Bristol completed a three-day repair and restoration to the “Small World” play area at Chandag Infants School.

‘Small World’ play areas are very valuable in providing early years children with a sensory, tactile and imaginative play experience which provides an opportunity to explore new materials, build language, practice social skills and gain an understanding of the world by child-led and self-directed play.

The school requested a natural landscape to feature areas of sand, embedded and loose stones, sparkly stones, fossil and fern imprints, feature roads and a couple of pipe tunnels, all with a neutral colour scheme.

This was a great project as almost all Bristol staff spent at least one day helping out and most importantly, the school were delighted with the finished result. “It looks fantastic and the staff are really pleased with the area.”

We were invited to attend a special assembly to reveal the repaired play area to the children and we presented them with toy cars and diggers. We hope the children enjoy their new ‘Small World’ play area.



Heeley People's Park

CRL Chesterfield recently made repairs and re-bedded loose copings on two stone walls at Heeley People's Park in Sheffield, securing the walls and making them safer for park users. As some of our colleagues live nearby, they were particularly keen to support their local park.

Heeley People's Park is the largest community run park in the country, with six different sites and a wide range of spaces, activities, plants, and wildlife. We are proud to support the park which is an important amenity for the surrounding community.

Frank Forman, of the Heeley Trust (the charity which looks after the park) said: “Firstly I wanted to say a huge thank you (CRL) and your team on behalf of Heeley Trust and Heeley People's Park. The work that has been completed is of the highest calibre and has made such a difference to the landscape.”

The park has plans to improve and grow and CRL are pleased to be able to play a small role in this process. We look forward to seeing the Heeley People's Park add to what is already a fantastic space!



general chatter

Following a Survey sent to all our employees and your feedback, we have:

- Increased our Maternity pay from the first 3 days full pay to the first 3 months full pay.
- Increased our Paternity pay from the first 3 days full pay up to 2 weeks full pay.

Congratulations

Congratulations to Georgijus Asanovas, Survey Technician, for achieving his HNC in Mechanical Engineering ...

What a great achievement!

Community Projects Scheme

Again, for those of you who are not aware, or don't take advantage of it, Centura has a Community Projects Scheme which can be used by all Group employees to actively serve the local communities in which they work and live.

To this end, up to 3 days paid absence per year will be granted to enable you to participate in an approved local community project. Schemes will typically involve care of the aged and infirm; projects for disadvantaged people, hospitals, community centres and other community initiatives. However, this scheme does not extend to fund raising for charities, working in charity shops, or anything to do with your own family or friends help and requirements

Anyone wishing to be involved must complete a Community Projects form; this can be obtained from the forms folder on the intranet or from the HR Department.