

CENTURYAN



St Andrews House, Windows

Issue 13
December 2017

This is an exciting time and it is anticipated that we will achieve significant growth this year.

Growth is what every company should seek, but not at any cost. Growth must be planned and contingencies must be made. In our industry it is actually not that difficult to improve order books mainly because of the way much of our work is procured. But with increasing activities we need resources of every kind, we need loyalty and commitment and we need funding. So a steady pace and firm foundations are what is required so that the business is sustainable in the future.

We must build on our reputation and our experience. I believe that our reputation continues to improve. We only need to look at what we are achieving on our projects and the feedback from our clients to confirm that. But we can never be complacent as we are always looking for the next opportunity.

All our teams have worked exceptionally hard in 2017. The results of that hard work are just beginning to show and I know that we will see further evidence as we move in to 2018.

Thank you for your commitment, loyalty and honesty. You are all part of the best team in the business and I want you to be proud of that.

We are all building up to the Christmas break. I am sorry that some of you may need to work through some of that period, and I thank you for that.

Please all have a brilliant and relaxing Christmas with your loved ones and I hope you will join me in planning for a successful 2018.



Tony Rimoldi
Chief Executive

Another memorable year

We are fast approaching the end of 2017 which marks yet again another memorable year for Centura and its trading companies.

The political situation in the UK remains uncertain especially as the Brexit negotiations continue with, as yet, no real decisions being made. Businesses are being encouraged to prepare but that remains difficult without any firm guidelines. Remarkably at Centura we are probably in our busiest trading period ever with expanding order books in most parts of the Group. This is a clear confirmation that investment in to UK infrastructure is continuing as is funding for many new and exciting private projects.

This is confirmed when we look at the progress being made on CRL's largest project ever at Oldbury viaduct in Birmingham. This huge contract is being ably managed by our Chesterfield team. And then we can be proud of Bristol's contribution to the new Dyson Technology centre at Hullavington which is a fantastic example of wonderful private venture into the UK of the future. In Scotland we are expecting instruction for more windfarm work in 2018 which is a great boost to the investment that we have made in the renewable energy market. And further South we continue to

see increasing interest in our restoration works alongside our more conventional activities. All CRL offices are busy, all offices are involved in a wide spectrum of work and all have orders taking them far into 2018 and beyond.

Our other businesses are also fast growing. In this current year we hope that our subsidiary companies will contribute more than 15% of group sales. CRL Surveys are now operating from 6 UK bases and chasing work overseas. At Equilux continued repeat work is contributing to strong sales with improving margins. TLF continues to service the needs of a small but loyal group of clients. Of note is the sharing of clients amongst not only the CRL regions but also with our subsidiaries.

Buxton remains on target for growth this year. Investment has been made in Samuely both in improved IT equipment and the premises shared with Buxton. 2018 will see some interesting new developments in these 2 companies.

Lifespan Structures is now firmly established in its market sector. Delivering bridges to a wide variety of clients it is well on track for its sales target.

the numbers

A regular feature in this newsletter is to publish a scorecard showing how the group is performing. The following tables has gathered together all the latest information from the current financial year.



Customers & Markets

954

No. of tenders submitted

£74.8m

Value of tenders submitted



369

No. of new contracts awarded

£29.3m

Value of contracts awarded



Learning, Quality & Innovation

987,437

RIDDOR free man hours

96%

CSCS carded site workforce

92%

Employees H&S Training Compliant

0

Suggestions submitted in the Innovation scheme

Operational

100

% of performance questionnaires showing client satisfaction

225

No. of contracts in progress

167

No. of contracts ahead of target

Financial & Stakeholders

Turnover year to June



Profit year to June



Overhead costs year to June



Cash Flow



Group Business Plan Sales Forecast for Year to June 2018

	Target	Total
Concrete Repairs Ltd		
Bristol	£6.5m	
Chesterfield	£12.75m	
Falkirk	£5.0m	
Mitcham	£11.4m	£35.65m
CRL Surveys Ltd	£1.5m	£1.5m
Buxton Associates Ltd	£1.25m	£1.25m
FJ Samuely Ltd	£0.4m	£0.4m
Equilux Ltd	£1.5m	£1.5m
TL Fire Ltd	£0.2m	£0.2m
Lifespan Ltd	£0.3m	£0.3m
Total Sales Forecast		£39.8m

group gossip

The Group would like to welcome...

Anthony Rooney
Asha Kumar
Callum Cruse-Morrell
Carl McMenamin
Christopher Lennon
Derek Chalmers
Djamila Zaid
Jason Harwood
John McFarlane (Jr.)
Juliel Goulart
Mark Wilson
Mick Balmforth

Parweza Trotman
Paul Higgins
Paul McNaught
Rish Mendis
Scott MacDonald
Shane Daniels
Sophie O'Brien
Sophie Parker
Steven Brookes
Steven Hunter
Tony Parsons

Say goodbye to...

Benjamin Brown
Clementine Dal Fitto
Freddie Williams
Larry Cooley
Madi Bolourchi
Mark Brandon
Matt Williams

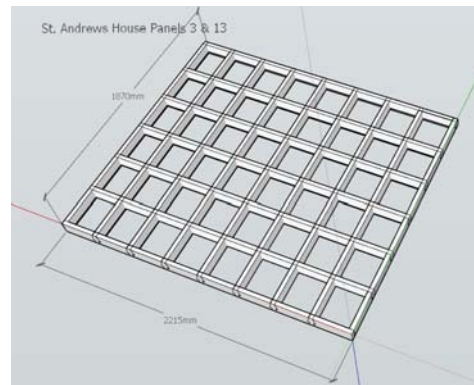
Nicholas Carter
Ojidur Rahman
Stephen Dodson
Terence Budd
Valentin Badica

Promotions...

Callum Cruse-Morrell (CRL CHE) - Improver
Richard Simpson (CRL CHE) - Improver
Jake Church (CRL CHE) - Tradesman
Marcin Dettlaff (CRL CHE) - Tradesman
Darren Shaw (CRL CHE) - Foreman

snapshot

St. Andrews House Windows



"We can do that"

This project in Edinburgh is now coming to a conclusion with the last of the new windows being installed in November.

This has been an interesting and challenging project where CRL designed, manufactured and installed new windows for St Andrews House in Edinburgh.

Now the question might be asked; why on earth would CRL get excited about a window replacement contract? The answer lies in the fact that these windows are made of concrete and are set into the façade of a grade "A" listed building that happens to be the headquarters of the Scottish Government in Edinburgh. This made this a job that very few people were interested in and when approached all of the precast companies, declined to price. This made it a perfect job for CRL's Falkirk office who love a challenge.

The early stages of the job involved lots of research into suitable materials and the manufacture of many prototype sections to establish an acceptable colour and finish for the new windows. In addition to this we also had to ensure that what was produced complied with current building regulations.

The principals of conservation were adopted where we endeavoured to replicate the windows using the same materials and construction techniques as were used when they were first manufactured. Our investigations of the existing windows revealed that the original moulds had been made of wood; so we used wood. The windows were reinforced using mild steel reinforcement; so we used steel reinforcement, although we did use marine grade stainless to prevent corrosion in the future. The windows were made of concrete; so we used concrete, pourable, self-compacting micro-concrete with a 28 day strength of 65N/mm²

Once we had made these decisions we manufactured two sample windows at our fabrication facility in Denny and had these fitted into the building to be assessed by the Project Manager for suitability. These were accepted and production of the other eighteen started in August, with the last of the windows being completed and fitted in November.

This has turned out to be a great project and although it is unlikely we will ever do another one like it, the lessons that we have learned and the ideas and innovative construction techniques

that we have come up with to make this project happen will be of great benefit for future projects where fit, tolerance and finish are critical.

The whole team involved in this project can be proud of what they have achieved in the knowledge that the windows they have made and installed in this building will probably never be noticed, the sign of a well-executed conservation project.

*Murray Soutar
Regional Manager
CRL Falkirk*



St Andrews House, Windows



St Andrews House, Windows

snapshot

Dolphin MSCP Refurbishment, Poole

Following two successfully completed contracts carried out to this structure in 2016, CRL were awarded the £1.42million pound, refurbishment of all lower concrete intermediate levels at the Dolphin MSCP, Poole, working for Borough of Poole.

The car park which serves the main shopping and town centre in Poole, along with tourist overflow on wet days and local bus and coach stations, has undergone a 27 week programme. Which included application of 21,000m² of careful surface preparation and Triflex MMA rapid setting waterproof level coloured coatings. Extensive concrete repairs, full decoration package including anti-carbonation coatings, colourful aesthetically pleasing decorations, joint replacement, barriers, signage and clever traffic management alterations allowing for a clearer free flow of vehicles between levels.

In addition both heavily trafficked staircases were repaired, painted with all floor areas covered with anti-slip, waterproof coatings, along with all external elevation facade surfaces cleaned,

repaired and painted the Dolphin Blue.

Through careful value engineering during a very competitive commercial and quality tender stage, CRL were able to employ Equilux Ltd to design, install and commission a state of the art wireless, smart technology lighting system throughout all internal and external parking levels, staircase's and external elevations.

The works to this high turnover, mainly short stay car park operated 24 hours as day, were carried out whilst the car park was occupied. High trafficked areas were completed during a mixture of days, nights and very early starts, also allowing for theatre opening times.

CRL Bristol would like to pay special thanks to Andy Barley, who joined us in May. Through hard work and enormous positivity CRL have completed this project in a very timely manner, especially considering the change of scope and compensations events issued by our client!



Dolphin MSCP



Dolphin MSCP

Linea Welsh Water MSCP, Cardiff

CRL Bristol were invited by Triflex and DCWW Welsh Water, to provide a cost effective solution to the top exposed decks to their highly occupied staff car park. The car park only built 9 years ago which consisted of a failing asphalt deck, which not only allowed water to easily pass to lower levels was causing severe issues with staff tripping on the mushrooms and uneven surface.

After on-site testing, CRL provided a solution to carefully remove the asphalt, prepare the concrete substrate and lay 2,100m² of Triflex MMA rapid setting DeckFloor coatings.

The project completed and returned to parking after just 4 of a 7 week programme, received amazing praise from Welsh Water and Vinci Facilities.

*Martyn Lewis
Contracts Manager
CRL Bristol*



Linea Welsh Water MSCP

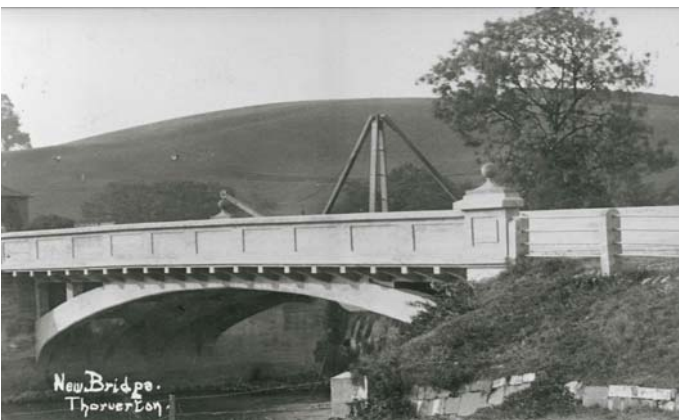
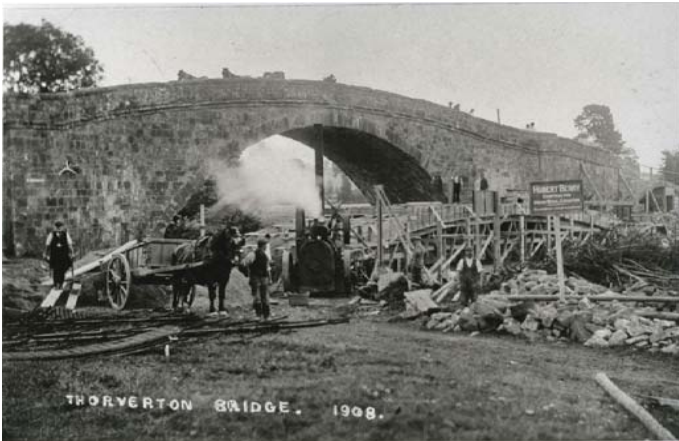


Linea Welsh Water MSCP

snapshot

Thorverton Bridge

Thorverton Bridge is a single span 26m long reinforced concrete arch beam bridge across the river Exe approx 10km north of Exeter. It was constructed in 1908 and is one of the earliest examples of reinforced concrete construction in Devon. It is a grade II listed structure.



Above photos; 1, 2 and 3 – showing construction phase of new bridge and the removal of the original stone bridge.

CRL are undertaking extensive repairs to the bridge arches and soffits. An impressed current CP system installed in 1997 has been removed - whether the system ever functioned is questionable. Following a survey by hammer testing, around 16 cubic meters of existing concrete has been removed and

replaced. Hydro-demolition was used for the bulk of the break out, with all reinforcement grit blasted prior to reinstatement with sprayed concrete. Passive corrosion prevention has been achieved using over 1000 sacrificial Vector XP type anodes within the new repairs and over 1100 Vector CC100 type anodes drilled into remaining areas not requiring repair. Additional reinforcement was installed to the outer cantilevered beams where existing concrete cover was excessive or reinforcement was insufficient. All the concrete surfaces are being prepared with high pressure water jetting, followed by 'bag-washing' to make good any minor surfaces defects/blow holes before application of primer and anti-carbonation coatings. The repair works will be completed before Christmas and we will return in the New Year to complete the waterproofing and re-surfacing of the bridge deck.

The works have been carefully sequenced to allow the bridge to remain open to traffic (reduced to a single a lane, under a traffic light system) whilst requiring no temporary propping. Access to the underside of the bridge and the outer face parapet walls consisted of a scaffold hung from the bridge deck. Holes were drilled through the bridge deck and dywidag bags and waler plates fixed through them and the scaffold fixed to these. The extent of the scaffold has been carefully planned and sequenced with our client, Devon County Council and the Environment Agency to ensure flood risk has been minimised. This has involved undertaking the works in 2 phases and keeping head room to under 1.5m.

The site team have worked extremely hard on this demanding project with so many works activities and phases. My thanks goes out to the Site Manager: John Arnold and to the Contracts Foreman: Mark Beddis and the site team for all their efforts and dedication for their hard work on the project so far.

"Well done guys"

*Roger Southwell
Contracts Manager
CRL Bristol*



Thorverton Bridge

snapshot

Drax Power Station

CRL have been awarded a framework contract at Drax power station, this is following tendered works completed in 2016, Drax were so happy with what we did for them that they negotiated a framework deal.

There is no time scale to this framework it is reviewed on a yearly basis, Drax maintenance budget runs from Dec to Dec. To date we have completed around 100k worth of work this financial year and are due back on site in Jan/Feb 18 when the new budget is released.

Drax is like a large town in its own right (its Huge!) works are varied and each section of identified works is separately priced under agreed rates within the framework.

We are constantly being praised for our attitude towards health & safety and compliance with Drax procedures. On a recent external safety audit CRL were awarded 100% compliance much to the delight of Drax management.

Well done to Mark Donkin (CRL Foreman) and his team and keep up the good work.



Draw Power Station

Stef Fox

Senior Contracts Manager, CRL Chesterfield

Hope & Cauldon Cement works



Silo 8 at Cauldon works

CRL have been awarded further works under a framework agreement with Breedon Cement group who own Hope works.

We are also working at Cauldon Cement Works owned by La Farge group and are hopeful of a further framework agreement with them.

Both are large cement works based in the peak district and Staffordshire, like Drax the works are varied and are based upon a schedule of Rates, again these are reviewed on a yearly basis.

Like Drax both these facilities are very safety conscious and sticklers when it comes to following their procedures.

On two separate occasions on both projects CRL were awarded 100% compliance with procedures following an external audit.

They were most impressed with the 'you said we did' proactive safety initiative developed by CRL Foreman Lee Tandy and are now pushing other contractors on site to do the same.

Well done to Lee and his team and keep up the good work.

Stef Fox

*Senior Contracts Manager
CRL Chesterfield*

snapshot

Southend Pier Contract

Southend Pier Receives a special visitor!

Some of you who are old enough will remember Frank Dyton who was our Managing Director before Tony until 1991. Frank joined the business in 1960 as an Engineer and joined the CRL Board in 1971.

CRL have always been involved with repairing marine structures which are an essential part of the UK Infrastructure. Frank had an affinity with the marine works from his love of the sea, living in Southend and as a member of the local sailing club.

I spent a lot of my early years with CRL working on marine projects with Frank both in the UK and occasionally overseas surveying the work, tendering the repairs and managing the contracts. I recall spending several days in mid-winter in a rowing boat under Ryde Pier and getting badly sunburnt in Mombasa! They were and still are challenging repair schemes in difficult environments.

Recently we have been undertaking some trial concrete repairs and cathodic protection work at the end of Southend Pier for Southend Council. I remembered that Frank often talked about the work CRL carried out on the pier 40 years ago and he had presented a paper on the subject, "Case histories of repairs of maritime structures", to the Institution of Civil Engineers in 1978. So I telephoned him to see if he would like to visit the site with me which he immediately accepted.

On the 14th September I collected Frank from his house overlooking the sea in Westcliff-on-Sea to visit the site just 2 miles away. Trevor Tiffin collected us from the base of the pier and drove us up the 1.34 mile long pier in a buggy to our site compound at the far end. After a safety briefing we descended the pier steps to the lower gallery where the work was being carried out to repair 6 beams, 6 columns and 5 soffits followed by the installation of a mesh and overlay CP system.

We were able to see the repairs undertaken 40 years ago by CRL and managed by Frank. After 40 years and 1.3 miles out to sea some repairs were starting to deteriorate but with no other corrosion control methods at the time apart from black bitumen paint the repairs have performed surprisingly well. We spent about an hour on site viewing the old repairs and the new on-going work. It was because of Frank's initiative that we started to undertake cathodic protection works in 1988 with technical support from Taywood Engineering and we continue to lead this sector of the industry.

Afterwards I took Frank back to his house where we were joined for lunch by Frank's wife, Rita, at a nearby restaurant. Frank handed over the original company records and seals dating back to the beginning of the business in 1955 which will now be kept at the Head office as part of our historical archives.

Frank retired from the business in 1992 at the age of 61 and continues to enjoy a healthy, active and enjoyable retirement with Rita. His continued enthusiasm for our industry was obvious to see when he visited our site and I know he follows our activities with interest. He sends his best wishes to all the staff at CRL and Centura Group particularly those who have worked with him both current employees and retired.

I would finally like to say a big thank you to Trevor Tiffin, Gary Cooley, Ricky Ingram and Shane Homer for making Frank so welcome which I know he appreciated. I am sure he will want to visit the site again when we start the main works!

*John Drewett
Group Marketing Director
Centura Group*



Southend Pier Repairs in 1976



Frank and Trevor inspect the old repairs



Frank hands over company records to John

snapshot

Lifespan Structures

New FRP Bridge for Moat to Historic Hall. Hindringham Hall was built for Henry Fitzroy, the illegitimate son of King Henry VIII. Its a Grade 2* listed moated house with the moat itself dating back to 1100AD.

Lifespan were introduced to the project by Samuely & Partners and we worked closely with the owners of the property to come up with a suitable design for the 14.8m span and 1.2m clear width parapets. Allowing the client to select and supply their own parapet and providing an accentuated longitudinal curve to provide a slender and elegant structure, using contrasting modern materials whilst blending into to the historic location were all key in securing the project.

The new bridge replaced a timber and steel cable bridge which had come to the end of its life and the new bridge will provide many years of maintenance free life, allowing visitors to explore the gardens and cross the moat.



FRP Bridge for Moat to Hindringham Hall

*Martin Richardson
General Manager, Lifespan Structures*

FJ Samuely

Primark, Milton Keynes

Work is progressing on site to transform the former BHS unit in to a brand new Primark store. The structural work is extensive; this includes the removal of the roof, adding a new second floor for trading and a new roof over the top.



The first real work is the excavation and construction of the base for the tower crane.

On the first floor strip out is now complete.

The shell and core works are scheduled to finish at the end of November 2018.



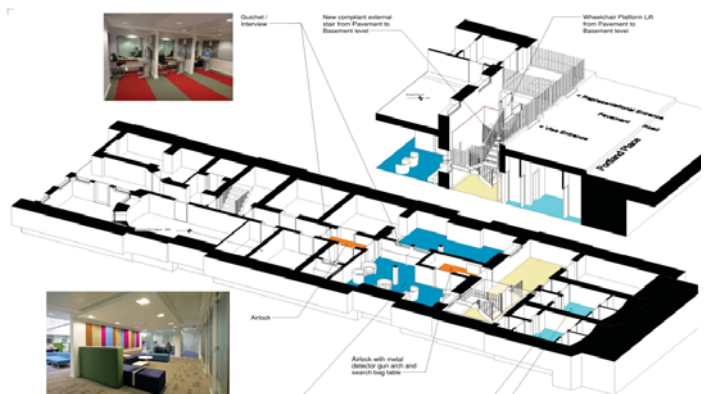
Kenyan High Commission

Alongside architects Jordan Batemen we are appointed to design the refurbishment works for the Kenyan High Commission on Portland Place.

This is a listed Georgian building and the proposed alterations obviously have to take this in to account.

We're at a fairly early stage and the image (on the right) gives an idea of how the Visa section could be improved.

From a structural perspective the works are fairly straightforward but we need to be mindful of English Heritage requirements regarding reversibility.



snapshot

Buxton Associates

Queensbridge House

Buxton Associates are the Monitoring Structural & Civil Engineers on the Queensbridge House Hotel project at Upper Thames Street, near Blackfriars in the City of London.

This 5-star Hotel will have over 220 rooms and the contract value is £60m.

Our Client is 4C Hotel Group who are developing the property for Westin Hotels. The Main Contractor is Vascroft Contractors Ltd and the Architect is Dexter Moren Associates.

With regard to construction progress, the enabling works contract has been completed and the demolition element is underway. Piling works are due to start in December.

The hotel is scheduled to open in the Summer of 2020.



Queensbridge House

Langley Leisure Centre Update

The construction started on site in August 2017 to extend existing facilities and renew tired equipment and amenities. The foundations and steelwork for both gym extensions have already been installed.

The centre is expected to open in summer 2018 and will include:

- a single-storey gym extension to both the front and rear of the existing gym (doubling the gym's capacity)
- repairs to the existing roof structure
- new flooring and wall tiling to both the swimming pool and the changing village
- new fit out of the dry changing rooms
- replacement of the existing mechanical, electrical and plumbing equipment
- a new pool filtration system
- a new spa area

We were also involved in a new car park design which is already under construction. Once finished the borough of Slough and its residents will have access to a superb new facility which is accessible and brought right up to date.



Langley Leisure Centre

Salt Park Extreme Sports Centre Update:

The construction started on site in June 2017 to create a new family activity centre. The recent ten pin bowling facility is under transformation into a mixed use facility for people of all ages. The internal foundations for a new mezzanine and a hire-wire climbing zone have already been constructed.

The new centre is expected to open in March 2018 and will include:

- ten pin lanes in a separate area with its own bar
- large soft play area for 6 months to 9 year olds
- trampolining zone with basketball hoops and battle pits
- hire-wire climbing zone with tight ropes and suspended mid-air tubes
- party rooms
- café
- bar

We were also involved in a new car park design which is already under construction.



Salt Park Extreme Sports Centre

snapshot

Buxton Associates

RCI 2017 Show

Buxton Associates worked with Michael Sodeau Studio on the design of a free standing Expanded Polystyrene (EPS) Sculpture erected for the RCI 2017 exhibit in the RIOCH Stadium, Coventry.

The sculpture comprised a blend of a two parabolic arches encompassing saddle point (for all you math geeks). In numbers that's 21m³ of EPS, weighting a total of 750 kg (... nearly a tonne of feathers), it measured 7.7m long, 5.5 m tall and 6.3 m wide at the top, tapering to a narrow point at the base. As always, the trick is to make these things stand up!

The EPS was designed to cantilever 3 m each side of an aluminium support frame comprising a tied arch carrying vertical loads and tapered truss resisting lateral loads and out of balance forces.

The Chase

Buxton Associates worked with Giles Pike Architects to modernise this Victorian townhouse. This relatively small project involved the creation of a bespoke glazed extension, complete with floating staircase with glass balustrade and light well between the lower and upper ground floors.

Westgate School, Slough

We have been providing structural and civil engineering services for the extension to Westgate School, Slough, which has a build-value of £6m.

We originally produced tender drawings, along with the Client's Architect, Re-Format.

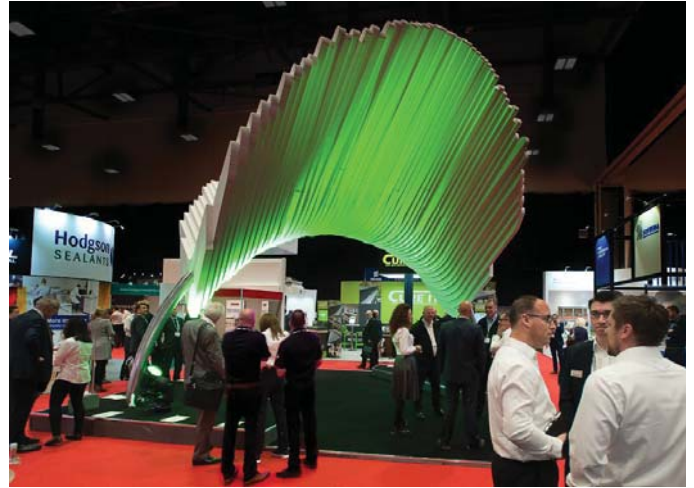
We were then appointed by the design-build Contractor, Feltham Construction, to produce working drawings and to see the project through to construction.

The design-build Architect is IID.

The construction of the two-storey structural steelwork frame with hollowcore first floor and roof slabs has been completed and works are progressing towards completion in time for the start of the 2018-19 school year.

The photo shows the steel trussed roof structure over the double-height hall.

*Stuart Hutchinson
Director, Buxton Associates*



RCI 2017 Show



The Chase



Westgate School, Slough

snapshot

Equilux various projects

London Stadium

Another challenging project Equilux secured in April. The requirement was to provide power to new LED screens for the purpose of advertising and public information.

The screens were to be fitted by others and our responsibility lay in getting power to each screen. Normally a straight forward procedure, but was made difficult by the location of the screens, these being situated on the concrete wall above the pitch side terraces.

Access could only be gained by specialist lifting equipment. After several failed attempts with different machinery we finally found something small enough to be moved around some very tight spaces and simple to operate.

That done we had only 3 days to complete our second fix in time for a Robbie Williams concert! Our Equilux staff and sub contractors pulled out all the stops working extra hours to complete on time.

Loads of experience working in an unusual location gained and upon switch on we had zero faults which considering the amount of cabling and connections involved is impressive.

Well done to Derek Corr who took the role as Site Foreman and Well done to all others involved.

*Russell Askew
Contracts Manager, Equilux Ltd*



Pihtos above: London Stadium

Royal College of Surgeons, Holborn, London.

The College is undergoing a complete rebuild which is a phased process of splitting the two buildings in half (Nuffield building and Barry building) ready for the Barry building to be demolished and rebuilt with all staff moving into the Nuffield building for 3 years. Once the new Barry building is complete all staff move back with the Nuffield building then sold to the London School of Economics.

Equilux have looked after the Fire alarms system for many years and it was our responsibility to split the fire alarm system which incorporates 4 fire panels and 16 loops (approximately 1200 devices) down the middle and keep the Nuffield building serviced and maintained for the 3 years until the new RCS building is complete. The project was completed in October.

Rutherford Appleton Laboratories, Didcott.

We have carried out various Mechanical and Electrical projects within this ground breaking Scientific campus.

Building R 31 Nursery expansion.

This project involved a full strip out of the electrical services, heating and hot and cold services. We installed new lighting and small power to the new nursery layout which included new infants and staff toilets and a kitchen. We also installed a new heating system throughout with new mechanical services to the kitchen and toilets.

Building R 80 New Mezzanine office.

We installed a new small power system to the new office area and a new supply and installation of the fan coil units with new ventilation ductwork and hot and cold pipework modifications.

Various other buildings on campus.

Building R 89: Disconnect and isolate existing chillers and modify and renew existing chiller supplies to facilitate the installation of the new chillers. Building R 40: Supply and install new lighting and power to new small office. Building R 26: Supply and install new small power to small Laboratory conversion and also run new water supply and install a water heater to a new sink within the laboratory. Building R 31: Relocate data cabinets and extend fibre optic and CAT 6 data cables to new locations within the 1st floor level. Building 100: Supply 400 volt power circuits to new cranes within the zero gravity research department.

*Daniel Crowley
Contracts Manager
Equilux Ltd*

snapshot

Sto Pavilions, Teignmouth

Project name: Pavilions, Teignmouth

Completed: 2016

Architect LHC Architects

Applicator: CRL Facades

Sto Products: Sto Ventec Glass rainscreen cladding system,
StoRend Fibre Plus

Installation of StoVentec Glass panels on the Carlton Pavillion, a new arts centre by the seafront in Teignmouth.

The panels are a composite of toughened glass bonded to a carrier board, which is made out of 96% expanded glass granulate manufactured from recycled glass that is combined with epoxy resins at high temperature.

Glass fibre mesh is laminated on both sides providing additional strength. The panels are fitted to the Sto substructure of brackets T's and rails using carrier profiles that clip onto the Sto Graf rail.

All this is constructed from a SFS Metsec frame and CP board. Design checks were carried out by Buxton Associates (sister company of Concrete Repairs Limited).

"INCA 2017 Award Ceremony - Highly Commended"

Project: Pavilion New Arts Centre, Teignmouth

Location: Teignmouth, Devon

Client: Devon Contractors Ltd

Value: £495,424.00

*Chris Glinn
Facades Estimator
CRL Bristol*



Sto Pavilions, Teignmouth



Sto Pavilions, Teignmouth



Award won: Pavilions, Teignmouth



Sto Pavilions, Teignmouth

snapshot

Safety, Health, Environment & Quality

A CRL employee recently suffered chemical burns to his hands whilst installing anodes.

The employee was wearing cut resistant gloves and not waterproof chemical resistant gloves as specified in the materials safety data sheet and Sygol CoSHH assessment.

Wear suitable waterproof chemical resistant butyl rubber or nitrile rubber gloves (or other suitable variety as specified in the CoSHH assessment) when handling and installing galvanic anodes such as Sika/Vector XP or CC or CPT duogard.

If you have any health and safety issues that you wish to discuss contact your supervisor, line manager or Safety Advisor.

Remember there must be NO COMPROMISE where health and safety is concerned



Safety Alert: Photos above results from chemical burn

Accreditation Update

CRL have successfully completed their transition to ISO 9001:2015 (Quality management systems) and 14001:2015 (Environment management systems) and re-certification to OHSAS 18001 (Health & Safety management systems).

TL Fire successfully completed their transition to ISO 9001:2015 and;

CRL Surveys successfully completed their re-certification to UKAS ISO/IEC 17025:2005

In 2018 CRL will work towards their transition from OHSAS 18001 to the new ISO 45001 (H&S), CRL Surveys will work towards transition to UKAS IOS/IEC 17025:2017 and Buxton Associates will continue to work towards their transition to ISO 9001:2015....

Additional free childcare

The Government, in September 2017 introduced additional free childcare hours for working parents, allowing parents of three and four year-old children to get 30 hours of nursery care each week.

Are you eligible and how do you apply?

You can usually get 30 hours free childcare if you (and your partner, if you have one) are:

- In work – or getting parental leave, sick leave or annual leave
- Each earning at least the National Minimum Wage or Living Wage for 16 hours a week – this is £120 if you're over 25
- This earnings limit doesn't apply if you're self-employed and started your business less than 12 months ago.

You're not eligible if:

- Your child doesn't usually live with you
- The child is your foster child
- Either you or your partner has a taxable income over £100,000

You can get 30 hours free childcare at the same time as claiming Universal Credit, tax credits or childcare vouchers.

To find out more about how to apply, simply visit the Government's dedicated web page here

<https://www.gov.uk/help-with-childcare-costs>

group gossip

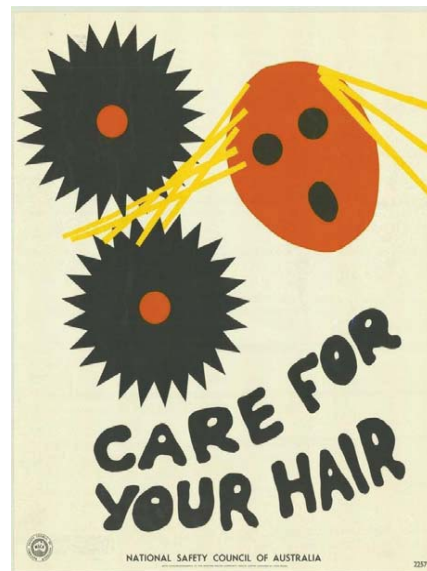
Announcements

Congratulations go to our Group SHEQ Advisor Nigel Roper who has just completed 30 years' service with the Company. Nigel trained as a joiner and spent 19 years with Gleeson before joining us in 2006.

Nigel is passionate about health and safety and works tirelessly to ensure that we are all kept up to date with current H&S legislation and best practise. Nigel's H&S knowledge is second to none in our industry and his personably approach wins respect with everyone he encounters.

Well done Nigel, in not only completing 30 years' service, but in keeping us all safe and well. It's no exaggeration that Nigels' common sense approach has made our sites safer with a healthier working environment, you really have made a difference, well done.

It is a bit of a shame however that Nigel didn't follow this advice from an Australian Safety Poster in the 1980's ->



Andy Came
Group Operations Director
Centura Group



I am pleased to confirm that Mr Kevin Jones has accepted an invitation to join the Board of Concrete Repairs Ltd. It is hoped that this will enhance the current Board skills and at the same time develop new ideas and strategy for the future.

Tony Rimoldi
Group Chief Executive
Centura Group

Awards

Well done to all the team who worked on the Coronation Parade in Folkestone for their recent winning of the 2017 Structural Concrete Alliance award for 'Repair & Refurbishment'

The award, which was handed out at the Concrete Society Awards evening took into account the technical complexity, innovation, industry interest and the multi - discipline input of the project, of which this project had loads!

Working to a strict programme to remove and replace 350m3 of spalled concrete and install one of the biggest cathodic protection systems in recent times was made all the more difficult having to deal with the tides and the general marine environment. This project shows what a bit of ECI and pre-planning can achieve. Well done guys!

Mike Balletta
Infrastructure Manager
CRL Mitcham



group gossip

Congratulations to...



Congratulations to Nigel Pierce (CRL Surveys) and wife Helen on the safe arrival of baby Rebecca Kirsty Pierce born 4th December weighing 9lbs 6oz.



CRL Chesterfield Supervisor, Trevor Stockdale develops new PPE for mixing up out of date materials!

Employee Profile



Name?	Kerry Bryant
DoB?	30 May 1985
Born?	South London
Status?	Single
Company?	Concrete Repairs Ltd
Position?	Contracts Co-ordinator
Joined?	May 2017
Hobbies?	Singing, Reading & Swimming
Pet Hates?	People that have an inability to say please and thank you!
	Manners cost nothing!
3 to Dine	Prince Harry
With?	Jodie Foster
	Channing Tatum

Evening Class Claim Scheme

The company will contribute up to £100 per employee, per academic year, towards the cost of an evening class at a local college or education centre. There is no restriction on subject matter.

For more info contact Nicky Hill, Group Training Officer 02082884836.

ASK TONY

Do you have any questions you would like answered straight from the top? Then ask Tony!

Email / fax your questions in and Tony will reply.

tonyrimoldi@centuragroup.co.uk
for email or fax your questions on
020 8288 4839